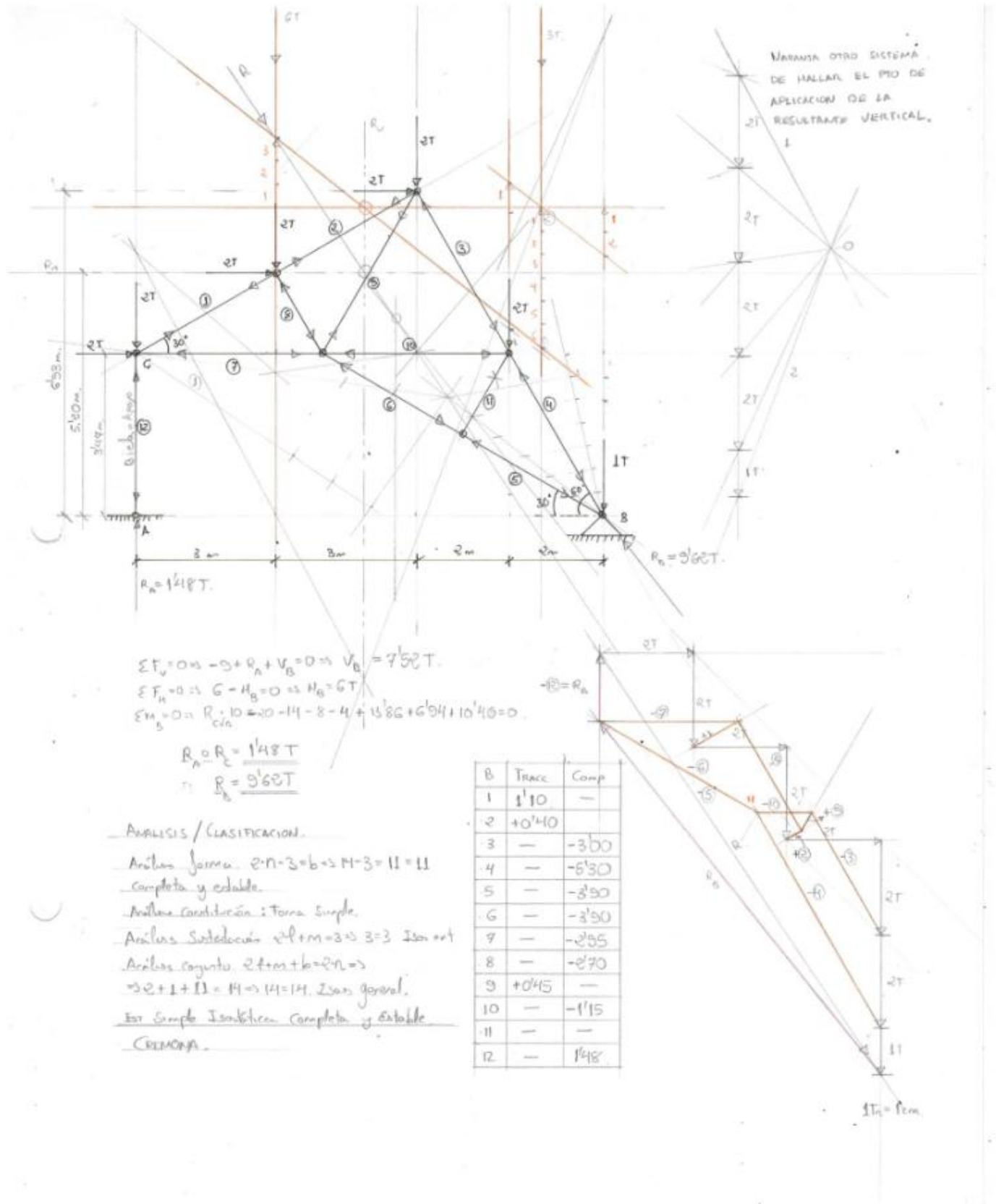
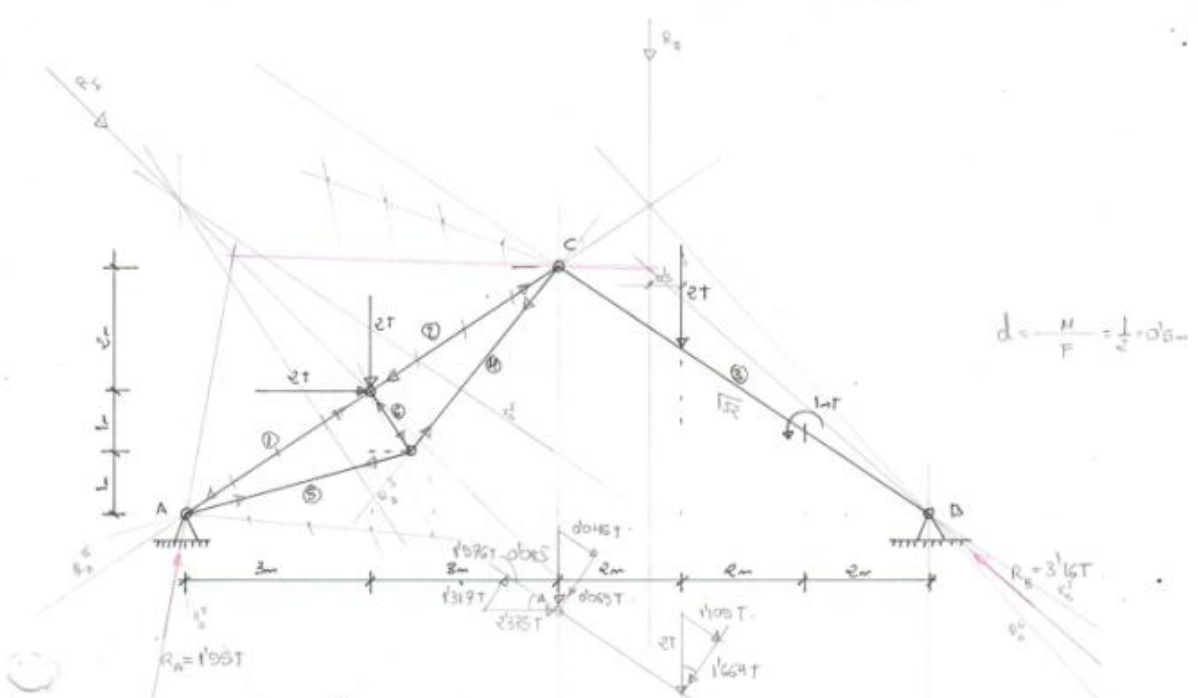


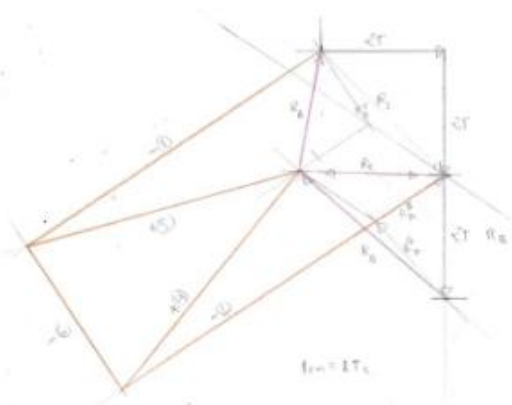
Estructuras de Nudos Articulados:

De las estructuras indicadas se pide obtener los esfuerzos en todas las barras.

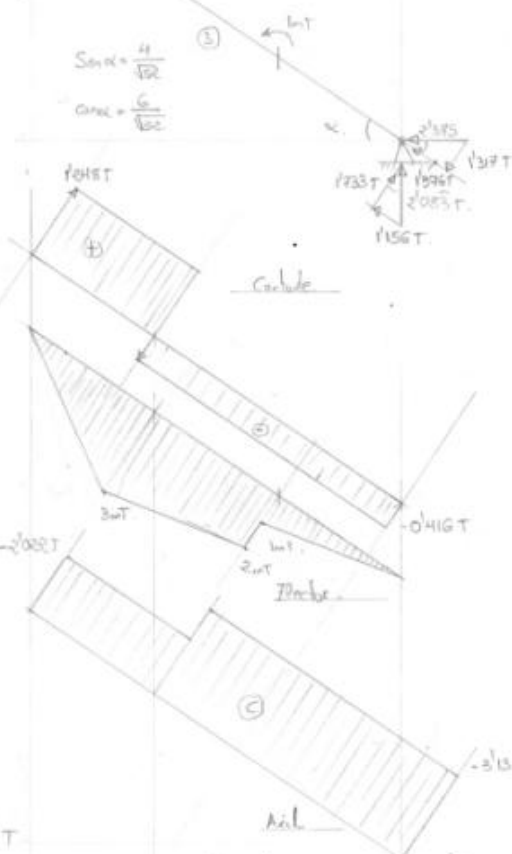




$$d = \frac{M}{F} = \frac{1}{2} \cdot 0.6 =$$



B	TRACC	COMP
1	-	-5.70
2	-	-6.30
3	-2.002	-3.131
4	+4.55	-
5	+4.55	-
6	-	-2.80



$\sum M_A = 0 \Rightarrow +6 + 4 + 6 - 1 \cdot V_B \cdot R = 0 \Rightarrow V_B = 2.023 T$
 $\sum F_x = 0 \Rightarrow +10 + V_A = 0 \Rightarrow V_A = 1.016 T$
 $\sum M_C = 0 \Rightarrow 4 - 1 \cdot V_B \cdot 6 + H_B \cdot 4 = 0 \Rightarrow H_B = 2.575$
 $\sum F_H = 0 \Rightarrow H_A + 2 = H_B = 0 \Rightarrow H_A = 0.575$
 $R_A = 1.953 T \quad R_B = 3.159 T \quad R_C = 2.576 T$

Ailun fino $2 \cdot 2 - 3 \cdot 6 = 10 - 3 + 7 > 6 = 1$ Angulo
 Ailun Carlotario: compo de fureto
 Ailun Intelectual $2 \cdot 2 + 1 - 2 = 1 > 2$ Angulo
 Ailun Caprich $4 + 0 + 6 - 10 = 0$ Equilibrio
 Estructura Isostatica Compuesta de fureto y Arco Triangulo